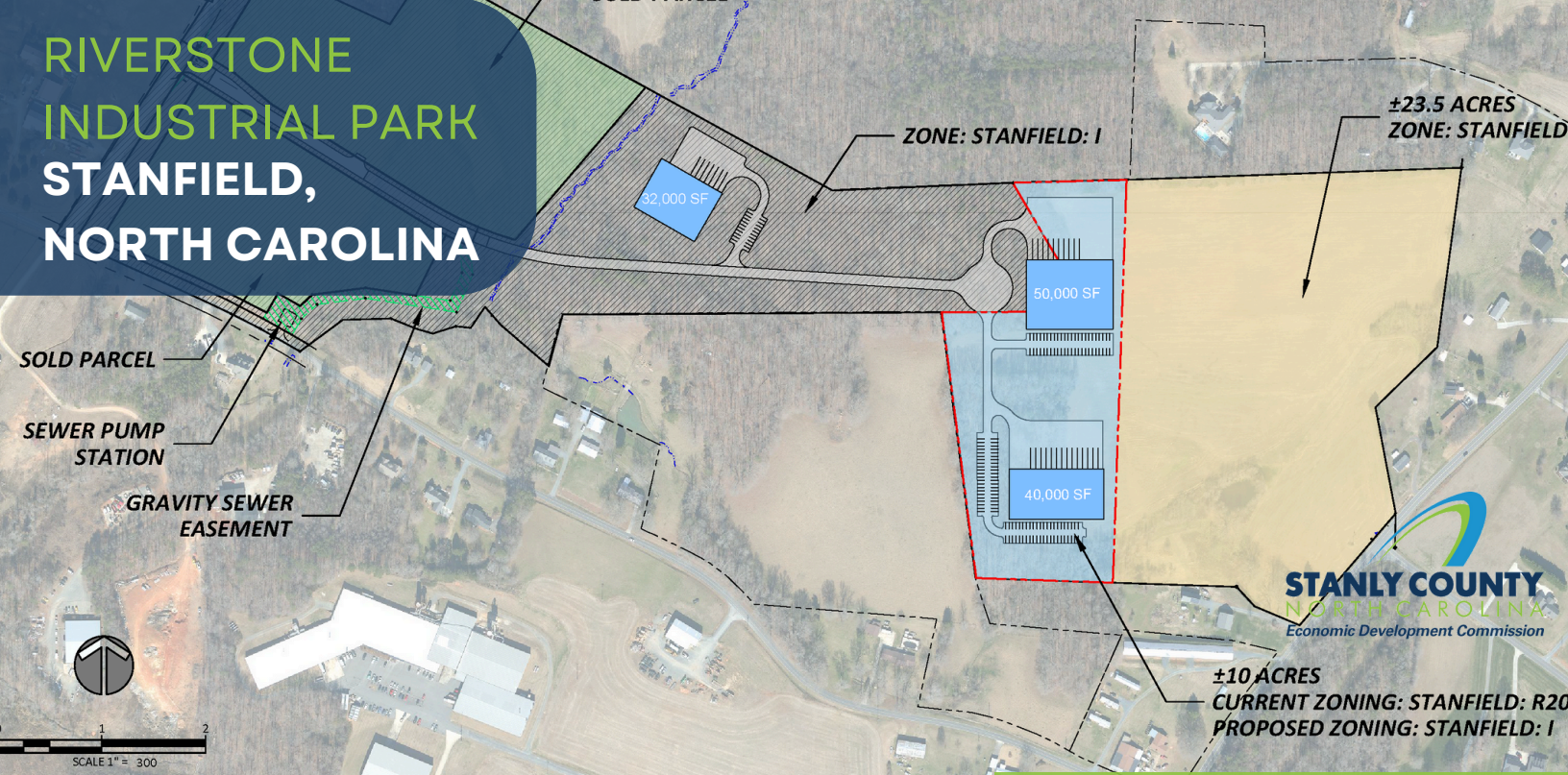


RIVERSTONE INDUSTRIAL PARK STANFIELD, NORTH CAROLINA



INDUSTRIAL ZONING



CALL FOR MORE INFO
704.986.3682

PROPERTY FEATURES

Located in Stanfield, NC, with close proximity to 4-lane 24/7 connecting to I-485. It is within 30 miles of Charlotte and 1 hour to Charlotte Douglas International Airport.

- Electricity: Duke Energy or Union Power
- Water & Sewer: Stanly County
- Natural Gas: Piedmont Natural Gas
- Telecommunications: AT&T

- ✓ **+/- 23 acres**
- ✓ **Publicly owned**
- ✓ **Industrial Park setting**
- ✓ **Customer choice electric**

Foreign Trade Zone #57
Air attainment status

STANLY COUNTY ECONOMIC DEVELOPMENT

Stanly County offers aggressive local incentives, convenient highway access, and the lowest sales tax in the Charlotte region.



info@stanlyedc.com



www.stanlyedc.com



1000 N. First St
Albemarle, NC 28001